



CONDITION REPORT



Report No:
2016946643
DATE
15/07/2025

MFC Auction House
M57 Pretoria Rd, Glenmarais, KEMPTON PARK
Gauteng

DEKRA MFC
M57 Pretoria Rd - 1619
KEMPTON PARK - GT
08610 33572



Assignment

Client	MFC Auction House	Inspection Location	MFC
Requested Date	15/07/2025		M57 Pretoria Road - 1619
Inspection Date	15/07/2025		Kempton Park - GT

Vehicle Data

Vehicle Type	PASSENGER VEHICLE	Registered Owner	
Manufacturer	MAZDA	Registration Number	FD14WBG
Model	MAZDA3 2.0 ASTINA AT [2014-2017]	Register Number	
VIN	JM6BM4278G0321501	Date Of First Licensing	
Engine Number		Last COR	
Doors	5	License Expiry Date	
Color	WHITE	Power / Displacement	
Year Model	2016	Paint Finish	M - METALLIC
Km Reading	283,085 KM	Fuel	PETROL
Cab / Body Type	SEDAN	Transmission	AUTOMATIC

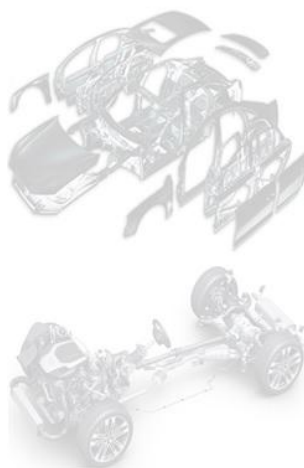
Vehicle Options & Accessories

Items

VEHICLE INSPECTION

DEKRA Automotive (PTY) Ltd.
97 Willem Cruywagen Ave
Klerksoord, Pretoria, 0200
Phone: 012 542 4867
www.dekraauto.co.za

VIN: JM6BM4278G0321501



Damage	Repair Way
Switch Electrical Window Winder front right Defective	Repair
Seat Front Left Torn / Cut	Repair
Seat Front Right Torn / Cut	Repair
Seat Rear Torn / Cut	Repair
Front Bumper Paintwork • Chipmarks	Repair
Bonnet Residual Traces of Repair	Repair
Front Fender Right Residual Traces of Repair	Repair
Rear bumper Paintwork • Scratched	Repair
Sunroof Damaged	Repair
Windscreen Cracked	Replace
Stabilizer Mounting Front Left Damaged	Replace
Stabilizer Mounting Front Right Damaged	Replace
Control Arm Bush(es) Front Axle Left Cracked	Replace
Control Arm Bush(es) Front Axle Right Cracked	Replace
Ball Joint(s) Front Axle Right Cracked	Replace
Tyre Front Left Smooth	Replace
Electric sunroof damage	Repair
Body exterior	Residual traces of repair work done on some body p
Body exterior	Minor dents scratches stone chips on some body pan
Body exterior	Signs of spray work done on some body panels
Engine	Bottom of engine is fully covered
Undercarriage	Is fully covered

Brakes

Brake Test Results

	Left	Right		
	Braking Force [KN]	Braking Force [KN]	Axle Weight [KG]	Deceleration [m/s ²]
Front	3.3	3.3	-	
Rear	1.9	1.5	-	
Emergency / Parking	1.4	1.2	-	

Tyres and Rims

Tyre Specification & Measurement

	Size	Load/Speed Index	Manufacture	Model	Type*	Production Date	Tread Depth (mm)
Front Left	215/45R18	93W	Winrun	R330	V	4623	0 mm
Front Right	215/45R18	93W	Anchee	AC818	V	4523	1 mm
Rear Left	215/45R18	93W	Winrun	R330	V	4623	3 mm
Rear Right	215/45R18	93W	Anchee	AC818	V	4523	3 mm
Spare	T125/70D16	96M	Dunlop	Temporary	V	0000	3 mm

* Tyre Legend: V=Virgin, R=Recap



Diagnostic

During the diagnostic the following error messages were detected: (See also attached Diagnostic Report. For more information regarding the Fault Codes (DTC) and the recommended rectifications please contact the workshops of the vehicle manufacture).

No	System	Code	Description	Status
1	ABS	C0072:68-60	BRAKE TEMPORARY TOO HIGH	

Inspection Conditions

No Test Drive

Battery Flat

Engine number – not possible to verify engine number (not visible without dismantling)

Inspection conditions for the vehicle inspection were sufficient

Comments

General Comments: ACCORDING TO AGE AND MILEAGE OF VEHICLE NORMAL WEAR AND TEAR ON INTERIOR, EXTERIOR, ELECTRICAL AND MECHANICAL PARTS.

Concluding Remarks

THIS REPORT HAS BEEN DRAWN UP IMPARTIALLY AND TO THE BEST OF OUR KNOWLEDGE

Technician

Trevino Julius

This document was created electronically and is valid without signature.

General Remarks:

The DEKRA Condition Report Inspection is a visual and functional check of all the items listed inside the report. DEKRA is not liable for concealed and hidden defects. DEKRA doesn't check: oil and fuel consumption, source of a leak if the area is dirty, oil pump strainer for any build-up of sludge, operation of cassette players or compact disc players, sound or radio reception, alarm systems, cylinder compression. We don't dismantle, remove or strip any part of the vehicle. Road testing is carried out within the immediate confines of the inspection location. This condition report is valid only for the described vehicle and the described condition at the time of inspection. DEKRA Terms & Conditions apply.



Oil cap and dipstick



Coolant reservoir



Warning lights illuminated



Automatic




Rear end



Sparewheel

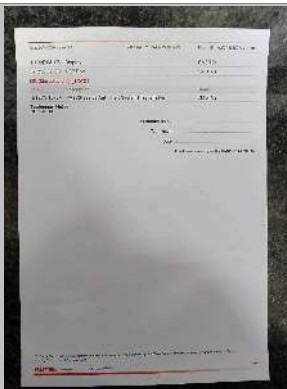


<div>  </div>			
<div> <div>ISSUE DATE</div> <div>2017-03</div> </div>			
<div> <div>Account:</div> <div>10100</div> </div> <div> <div>Accounting:</div> <div>23000</div> </div> <div> <div>End date:</div> <div>2017-03-31</div> </div> <div> <div>End date:</div> <div>2017</div> </div>	<div> <div>Car</div> </div>	<div> <div>License plate no:</div> <div>77333333</div> </div> <div> <div>Make:</div> <div>BMW</div> </div> <div> <div>Model:</div> <div>BMW 3</div> </div> <div> <div>Color:</div> <div>Black</div> </div> <div> <div>Year:</div> <div>2017</div> </div>	<div> <div>Car</div> </div>
<div> <div>File name:</div> <div>10100</div> </div>	<div> <div>File name:</div> <div>2017-03-31</div> </div>	<div> <div>File name:</div> <div>2017-03-31</div> </div>	<div> <div>File name:</div> <div>2017-03-31</div> </div>
<div> <div>File name:</div> <div>10100</div> </div>	<div> <div>File name:</div> <div>2017-03-31</div> </div>	<div> <div>File name:</div> <div>2017-03-31</div> </div>	<div> <div>File name:</div> <div>2017-03-31</div> </div>
<div> <div>File name:</div> <div>10100</div> </div>	<div> <div>File name:</div> <div>2017-03-31</div> </div>	<div> <div>File name:</div> <div>2017-03-31</div> </div>	<div> <div>File name:</div> <div>2017-03-31</div> </div>
<div> <div>File name:</div> <div>10100</div> </div>	<div> <div>File name:</div> <div>2017-03-31</div> </div>	<div> <div>File name:</div> <div>2017-03-31</div> </div>	<div> <div>File name:</div> <div>2017-03-31</div> </div>
<div> <div>File name:</div> <div>10100</div> </div>	<div> <div>File name:</div> <div>2017-03-31</div> </div>	<div> <div>File name:</div> <div>2017-03-31</div> </div>	<div> <div>File name:</div> <div>2017-03-31</div> </div>
<div> <div>File name:</div> <div>10100</div> </div>	<div> <div>File name:</div> <div>2017-03-31</div> </div>	<div> <div>File name:</div> <div>2017-03-31</div> </div>	<div> <div>File name:</div> <div>2017-03-31</div> </div>
<div> <div>File name:</div> <div>10100</div> </div>	<div> <div>File name:</div> <div>2017-03-31</div> </div>	<div> <div>File name:</div> <div>2017-03-31</div> </div>	<div> <div>File name:</div> <div>2017-03-31</div> </div>
<div> <div>File name:</div> <div>10100</div> </div>	<div> <div>File name:</div> <div>2017-03-31</div> </div>	<div> <div>File name:</div> <div>2017-03-31</div> </div>	<div> <div>File name:</div> <div>2017-03-31</div> </div>
<div> <div>File name:</div> <div>10100</div> </div>	<div> <div>File name:</div> <div>2017-03-31</div> </div>	<div> <div>File name:</div> <div>2017-03-31</div> </div>	<div> <div>File name:</div> <div>2017-03-31</div> </div>
<div> <div>File name:</div> <div>10100</div> </div>	<div> <div>File name:</div> <div>2017-03-31</div> </div>	<div> <div>File name:</div> <div>2017-03-31</div> </div>	<div> <div>File name:</div> <div>2017-03-31</div> </div>
<div> <div>File name:</div> <div>10100</div> </div>	<div> <div>File name:</div> <div>2017-03-31</div> </div>	<div> <div>File name:</div> <div>2017-03-31</div> </div>	<div> <div>File name:</div> <div>2017-03-31</div> </div>
<div> <div>File name:</div> <div>10100</div> </div>	<div> <div>File name:</div> <div>2017-03-31</div> </div>	<div> <div>File name:</div> <div>2017-03-31</div> </div>	<div> <div>File name:</div> <div>2017-03-31</div> </div>
<div> <div>File name:</div> <div>10100</div> </div>	<div> <div>File name:</div> <div>2017-03-31</div> </div>	<div> <div>File name:</div> <div>2017-03-31</div> </div>	<div> <div>File name:</div> <div>2017-03-31</div> </div>
<div> <div>File name:</div> <div>10100</div> </div>	<div> <div>File name:</div> <div>2017-03-31</div> </div>	<div> <div>File name:</div> <div>2017-03-31</div> </div>	<div> <div>File name:</div> <div>2017-03-31</div> </div>
<div> <div>File name:</div> <div>10100</div> </div>	<div> <div>File name:</div> <div>2017-03-31</div> </div>	<div> <div>File name:</div> <div>2017-03-31</div> </div>	<div> <div>File name:</div> <div>2017-03-31</div> </div>
<div> <div>File name:</div> <div>10100</div> </div>	<div> <div>File name:</div> <div>2017-03-31</div> </div>	<div> <div>File name:</div> <div>2017-03-31</div> </div>	<div> <div>File name:</div> <div>2017-03-31</div> </div>
<div> <div>File name:</div> <div>10100</div> </div>	<div> <div>File name:</div> <div>2017-03-31</div> </div>	<div> <div>File name:</div> <div>2017-03-31</div> </div>	<div> <div>File name:</div> <div>2017-03-31</div> </div>
<div> <div>File name:</div> <div>10100</div> </div>	<div> <div>File name:</div> <div>2017-03-31</div> </div>	<div> <div>File name:</div> <div>2017-03-31</div> </div>	<div> <div>File name:</div> <div>2017-03-31</div> </div>
<div> <div>File name:</div> <div>10100</div> </div>	<div> <div>File name:</div> <div>2017-03-31</div> </div>	<div> <div>File name:</div> <div>2017-03-31</div> </div>	<div> <div>File name:</div> <div>2017-03-31</div> </div>
<div> <div>File name:</div> <div>10100</div> </div>	<div> <div>File name:</div> <div>2017-03-31</div> </div>	<div> <div>File name:</div> <div>2017-03-31</div> </div>	<div> <div>File name:</div> <div>2017-03-31</div> </div>
<div> <div>File name:</div> <div>10100</div> </div>	<div> <div>File name:</div> <div>2017-03-31</div> </div>	<div> <div>File name:</div> <div>2017-03-31</div> </div>	<div> <div>File name:</div> <div>2017-03-31</div> </div>
<div> <div>File name:</div> <div>10100</div> </div>	<div> <div>File name:</div> <div>2017-03-31</div> </div>	<div> <div>File name:</div> <div>2017-03-31</div> </div>	<div> <div>File name:</div> <div>2017-03-31</div> </div>
<div> <div>File name:</div> <div>10100</div> </div>	<div> <div>File name:</div> <div>2017-03-31</div> </div>	<div> <div>File name:</div> <div>2017-03-31</div> </div>	<div> <div>File name:</div> <div>2017-03-31</div> </div>
<div> <div>File name:</div> <div>10100</div> </div>	<div> <div>File name:</div> <div>2017-03-31</div> </div>	<div> <div>File name:</div> <div>2017-03-31</div> </div>	<div> <div>File name:</div> <div>2017-03-31</div> </div>

Shock and brake report

[illegible]

Diagnostic test



Diagnostic test



FRONT RIGHT CORNER



REAR LEFT CORNER



INTERIOR (FRONT DRIVER DOOR)



DASHBOARD (W/ ENGINE RUNNING)



ODOMETER



90 DEGREE FRONT



90 DEGREE RIGHT



90 DEGREE REAR



90 DEGREE LEFT



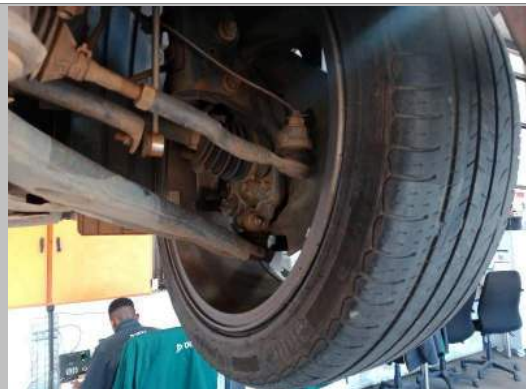
LF TYRE TREAD



LR TYRE TREAD



RR TYRE TREAD



RF TYRE TREAD



LICENSE DISC



VIN PLATE OR STICKER



ENGINE 1



CHASSIS



ENGINE 2



Seat Front Right



Seat Rear



Seat Front Left



Sunroof



Bonnet



Switch Electrical Window Winder front right



Front Fender Right



Windscreen



Stabilizer Mounting Front Right



Front Bumper



Front Bumper



Front Bumper



Front Bumper



Tyre Front Left



Stabilizer Mounting Front Left



Rear bumper



Rear bumper



Rear bumper



Control Arm Bush(es) Front Axle Left



Control Arm Bush(es) Front Axle Right



Ball Joint(s) Front Axle Right